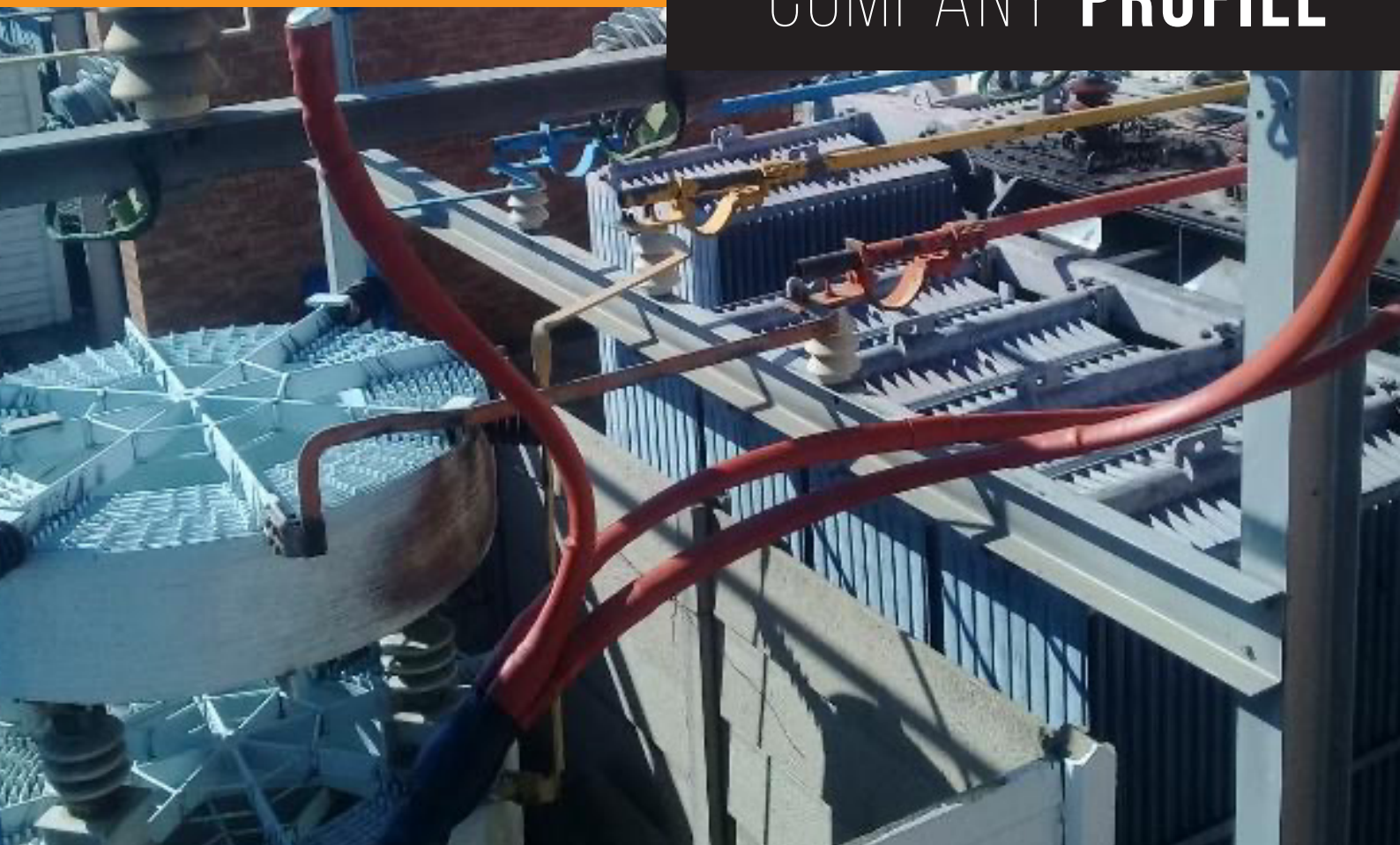




NOLEWU
CONSTRUCTION
ELECTRICAL AND CHEMICAL SUPPLY

2020

COMPANY PROFILE



INDUSTRIAL ELECTRICAL CONTRACTORS | MAINTENANCE | DESIGN



COMPANY BACKGROUND

Nolewu Construction Company was established in 2008.

Nolewu Construction is a black youth owned emerging enterprise established in January 2008 and registered with the Register of companies as a Close Corporation. The business activities are integrated into product supply and service provision.

Nolewu Construction is a wholly black owned electrical engineering construction and consulting company that seeks to provide specialised services to utilities and the private sector. The entity was registered in 2008 and has been growing since, with a customer focus. It is also an Eskom supplier



The aim of **Nolewu Construction** is to provide quality contracting services and consultancy to clients to deliver efficient, safe and purpose specific electrical designs and installations. As turnkey contractors we are able to provide accredited Project Construction Management expertise and professional Electrical Design services in the areas of: Residential, commercial and industrial estates, including Public Lighting Installations, Electrical Distribution and Sub Transmission Networks, Commercial and industrial installations such as shopping centres and industrial precincts.

This results in the business trading in all aspects of business. Fair business practice and the business vision are maintained in order to achieve the business goal and its values. The main business activities are to supply products and services to the nation.

The company has acquired most of its work experience from various projects that were sub-consulted under Eskom Company and Municipalities ranging from House Hold Electricity to HT line inclusive of Live Work Methods. The main priority of Nolewu Construction is to empower previously disadvantage individuals seeking success in the challenging multi-disciplined environment. This can be achieved through hard work and actual implementation projects to uplift rural communities through employment.

OUR MISSION STATEMENT

We are dedicated to successfully produce the best results in everything we do through innovation, practicality, teamwork and efficient service delivery. We are a results driven organization that strives to effectively meet the Client's objectives. NOLEWU CONSTRUCTION believes that given an equal opportunity to acquire skill, the previously disadvantaged are equally capable of producing the best result. This can only be achieved through hard work, determination, discipline and eagerness to learn. Our main objective is giving back to communities prioritizing the "poorest of the poor."

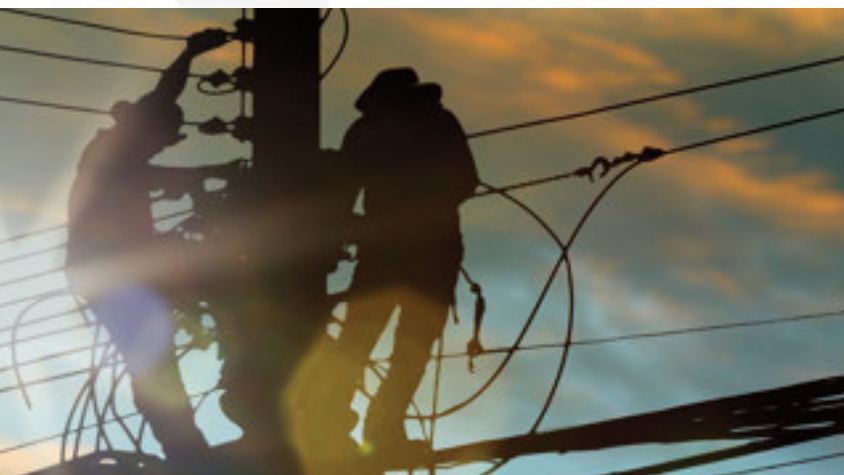
OUR MAIN OBJECTIVES

To provide cost effective quality solutions to client, to be actively involved in projects within the industry, develop projects at all levels of conceptual planning, implementation and maintenance. We intend to be actively involved in transferring our skills to the disadvantaged.

BUSINESS STRUCTURE

NOLEWU CONSTRUCTION is a 100% black owned electrical engineering company. We are involved in construction of MV and LV infrastructure. Testing of electrical protection schemes and metering.

The company fully supports development initiatives of parastatals, municipalities, mining and other industries. The company policy recognizes and endorses the empowerment of the less privileged.



EXECUTIVE SUMMARY

South Africa is in a state of economic transformation. Black people who were previously disadvantaged have been given a chance to participate in the building of the country's economy. This is one of the purposes of Nolewu Construction.

The business is directed and managed by highly motivated people and also adheres to the SABS standard. We supply products and render services based on the customer's needs and specifications. All changes of product type, colour and material are made after thorough consultation with the customer is through.



OUR VISION

It is our vision to encourage and motivate the country's youth to participate in the economic

- Development and growth.
- "Can do" attitude and continuous improvement Have passion for quality and innovation
- Profitable with integrity Relationship minded Be simply the best Excellence in service
- To be the leading electrical and security company in South Africa and beyond

BUSINESS OBJECTIVES

Creation of permanent jobs. Rendering services and supply products to satisfy the needs of individual customers, schools, Municipality, mining and all Provisional and National Government Departments. Focusing on the building and improving of rural economic Development and growth.

VALUES

Nolewu Construction subscribes to the following business values:

A. Equity

To provide services in a fair and equitable manner in all our dealings with our customers.

B. Integrity

Our company strives to honour our promises and abide to adequate delivery at all times

C. Quality

The company believes in giving its customers nothing less than the best quality products and services at all times.

D. Respect

Nolewu Construction is a company which understands and respects its customers, their needs, choice and their money.

E. Benefits

Quality is guaranteed

- most prices are negotiable
- Short workshops or training on hazardous products
- Value for money • Friendly advice and care.



OUR SERVICES

Provide turnkey electrification construction, project management and commissioning services for municipal entities and Eskom. We execute both overhead and underground reticulation projects including mini-substations, switching stations, medium voltage networks and LV house connections. TRANSFORMERS Provide installation services, cold commissioning, failure investigations and accurate routine maintenance assessments on power transformer's condition. Supply and installation of current transformers. LIGHTNING AND METER READING AUDITS A lightning audit of an installation will determine whether the most appropriate protection is currently installed. We offer these services for both buildings and substations.

THE SERVICES WE OFFER:

- Secondary Plant commissioning
- Primary Plant commissioning
- Infrared scanning
- Power Systems Maintenance
- Fault Analysis
- Standby/Technical Support
- Factory acceptance testing
- Site acceptance testing
- Upgrades/Retrofits/Modifications
- Substation Audits and Construction
- Street Light Maintenance



SUBSTATION SERVICES

The Substation Services team develops and provides technically advanced services to owners and operators of electrical distribution networks. Our services are primarily in the following areas: Substation construction Quality of supply, stats and check metering Protection systems RMU/RTU/ SCADA installations Installation and maintenance of electrical motors Construction of Electrification, Public lighting and Reticulation projects UPS purchasing, installation and commissioning

PROCUREMENT SERVICES

Negotiating and procurement of MV, LV & Substation equipment and ensuring quick turnaround delivery of procured services and equipment.

CABLE CONSULTANCY

Provides comprehensive technical support and consultancy on underground cable networks operating across the voltage ranges including cable fault location services. SWITCHGEAR Provide accurate assessment of switchgear condition using expert knowledge. We conduct refurbishments, maintenance, replacements and new installations of HV/ MV/ LV switchgear including high voltage testing and commissioning services. ELECTRICAL MOTORS Electrical motors have become an additional core business in the company. We have very experienced and dedicated resources for installation and maintenance of electrical motors. ELECTRIFICATION

CABLE TESTING SERVICES

- Cable Fault Location
- Cable Route Tracing and Mapping
- Cable avoidance and Live Scanning
- Cable Identification
- Cable Phasing
- Earth Resistivity Testing
- Partial Discharge Testing
- Tan Delta Testing
- Sine-Wave Pressure Testing
- AC and DC Pressure Testing
- Sheath Testing



OUTPUTS / DELIVERABLES

Doing business that goes familiar with the country's business legislations and OSH Act Regulations. Giving our customers products and services above the value of their money. Unsatisfied customers get money back guarantee. All services are bound to supervision, assessment and evaluation.

NOLEWU CONSTRUCTION



NOLEWU CONSTRUCTION LONG-TERM GOAL IS TO INTRODUCE PROGRAMS CONSISTING OF IN-HOUSE TRAINING, AND VACATION WORK TO ALL STUDENTS (I.E. FET COLLEGE GRADUATES) IRRESPECTIVE OF GENDER, RACE AND CREED.

LIST OF PROJECT DONE

- Minor reticulation and extensions
- Major Electrification
- Installation of Streetlights
- Wiring of School and Clinics
- Data Capturing
- GPS
- MV and LV Maintenance
- Electrification Tshwane Municipality (High Mast)
- Link Lines
- Street Lights Ekurhuleni Municipality
- Street Lights Maintenance Sub-Contracted for SS Trading
- Streetlight Maintenance Sub-Contracted for Ampcor Khanyisa
- Streetlight Construction Sub-Contracted for Ampcor Khanyisa
- Streetlight Maintenance Sub-Contracted for Bash Electrical



**TO BE THE LEADING ELECTRICAL
AND SECURITY COMPANY IN
SOUTH AFRICA AND BEYOND**



NOLEWU

CURRENT PROJECTS

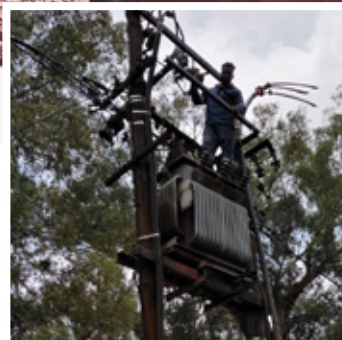
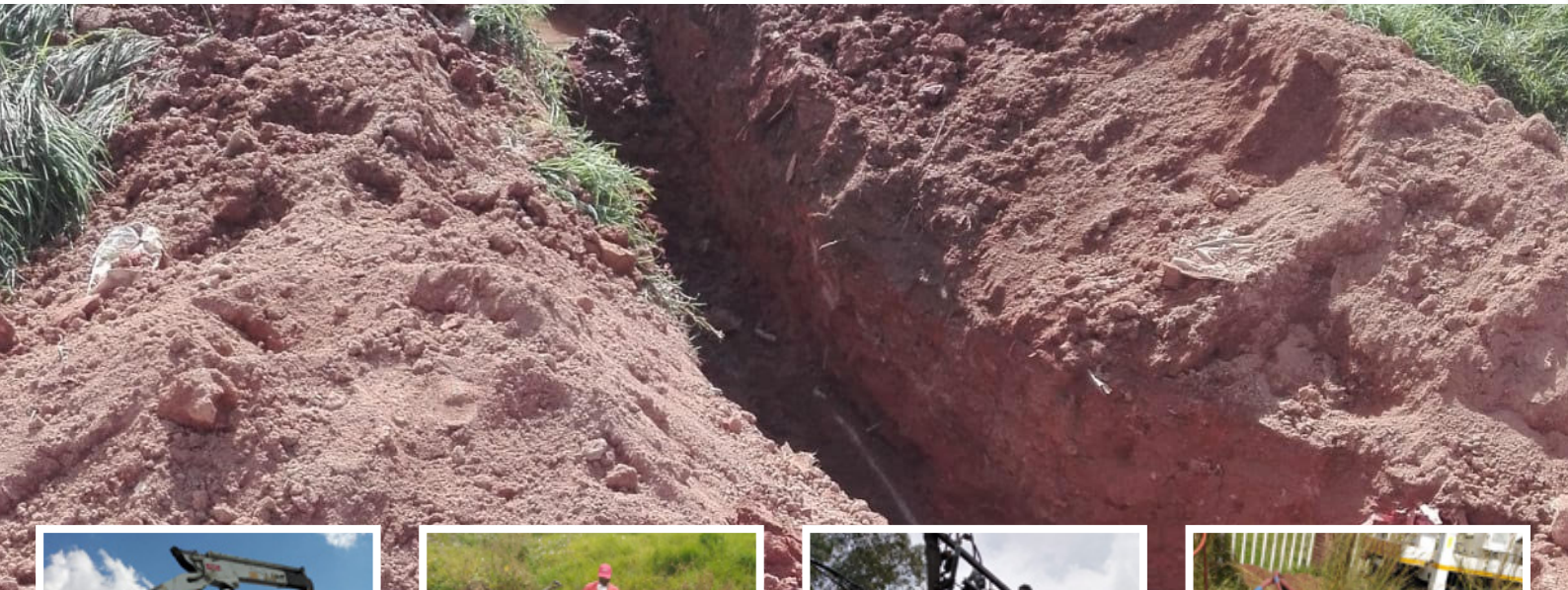
Streetlight maintenance (ekurhuleni current)
refurbishment of low medium and high voltage cables (ekurhuleni current)
maintenance of streetlights (city of tshwane current)
maintenance of streetlights (city power current)
testing on power cables & fault location (city power current)

COMPLETED PROJECTS

- Electrification At Obed Nkosi (Lesedi Municipality 6 Months Project)
- Streetlight Maintenance (Lesedi Municipality 18 Months Contract)
- Highmast Maintenance (Lesedi Municipality 18 Months Contract)
- Public Lighting And Infrastructure Maintenance (City Of Tshwane 3 Year Contract)
- Construction Of Streetlights (City Of Tshwane 3 Year Contract)
- Substation Inspection (Ekurhuleni 24 Month Contract)



GALLERY





33 KELLY ROAD
UNIT 6
JET PARK
0022



CELL: 078 779 6373
TEL: 011 397 1448



EMAIL: BRANDON@NOLEWU.CO.ZA
WEBSITE: WWW.NOLEWU.CO.ZA



REGISTRATION: 2008/097284/23
VAT NUMBER: 4440265678
INCOME TAX: 9828075 151
COIDA: 990000966530
B-BBEE CONTRIBUTING: LEVEL 1 (KCA/A/F/211)

CSD REGISTRATION: MAAA0227638
CIDB GRADING: 7EP PE
CRS NO: 172741
ECA: IE29270
PBF: 188339871